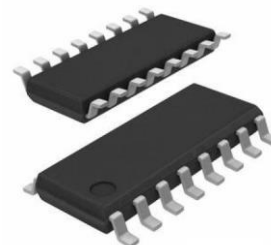


2.7V to 5.5V, 12Bit, Optional Built-in Reference, Four-Channel DAC

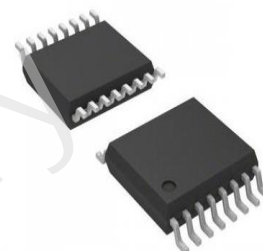
PRODUCT DESCRIPTION

The MS5814/MS5814T is a 12bit, four-channel output voltage DAC with optional internal reference. The interface uses four-wire serial port mode or I²C interface. The MS5814/MS5814T has 16bit control data, including DAC address, control byte and 12bit DAC data. The power supply range is 2.7V to 5.5V. The output of resistor string is connected to a class AB, rail-to-rail output buffer with 6dB gain. The MS5814/MS5814T integrates power-down mode to reduce power dissipation.

The MS5814 is available in SOP16 package and the MS5814T is available in TSSOP16 package.



SOP16



TSSOP16

FEATURES

- 12bit Accuracy
- Programmable Setup Time: 3μs or 9μs
- Built-in Optional 1.5V, 2.5V Reference
- Four-Wire Serial Port Mode or I²C Interface
- Internal Power on Reset
- Low Power Dissipation: 9mW, 5V (Slow Mode)
4.2mW, 3V (Slow Mode)
- Integrated REF Buffer
- Output Range: Twice the Reference Voltage
- Software, Hardware Power Down
- Power Supply: 2.7V~5.5V

APPLICATIONS

- Digital Servo System Control
- Digital Compensation and Gain Adjustment
- Industrial Process Control
- Mechanical and Mobile Control Equipment
- High-capacity Storage Device

PRODUCT SPECIFICATION

Part Number	Package	Marking
*MS5814	SOP16	MS5814
MS5814T	TSSOP16	MS5814T

* The package is not available temporarily. If necessary, please contact Hangzhou Ruimeng Sales Department Center.